



Noise Monitoring Result

Day Time (0700 - 1900hrs on normal weekdays)

Location: M1a - Harbour Road Sports Centre

Date	Time	Weather	Measurement Noise Level			Baseline Level	Construction Noise Level	Limit Level
			Leq	L10	L90	Leq	Leq	Leq
Unit: dB(A), (30-min)								
3/3/2014	9:30	Cloudy	73.1	75.5	69.0	72	66	75
10/3/2014	15:30	Cloudy	71.9	74.0	67.5	72	72	75
17/3/2014	15:50	Cloudy	72.8	75.0	68.5	72	64	75
25/3/2014	10:35	Fine	72.8	75.5	68.0	72	64	75

Location: M2b - Noon-day gun area

Date	Time	Weather	Measurement Noise Level			Baseline Level	Construction Noise Level	Limit Level
			Leq	L10	L90	Leq	Leq	Leq
Unit: dB(A), (30-min)								
3/3/2014	10:14	Cloudy	71.4	74.0	67.5	68	69	75
10/3/2014	16:15	Cloudy	68.9	70.5	66.5	68	63	75
19/3/2014	9:10	Fine	69.4	71.0	67.0	68	65	75
25/3/2014	11:20	Fine	68.2	69.5	66.0	68	59	75

Location: M3a - Tung Lo Wan Fire Station

Date	Time	Weather	Measurement Noise Level			Baseline Level	Construction Noise Level	Limit Level
			Leq	L10	L90	Leq	Leq	Leq
Unit: dB(A), (30-min)								
3/3/2014	10:52	Cloudy	67.3	68.5	65.0	69	67	75
11/3/2014	9:14	Fine	70.2	72.5	65.5	69	65	75
19/3/2014	9:55	Fine	68.5	70.5	65.5	69	69	75
25/3/2014	13:00	Fine	68.8	69.5	64.5	69	69	75

Location: M4b - Victoria Centre

Date	Time	Weather	Measurement Noise Level			Baseline Noise Level	Construction Noise Level	Limit Level
			Leq	L10	L90	Leq	Leq	Leq
Unit: dB(A), (30min)								
5/3/2014	13:53	Fine	71.1	72.5	68.5	67	69	75
11/3/2014	9:57	Fine	69.4	70.5	67.0	67	65	75
19/3/2014	10:42	Fine	69.3	71.0	66.5	67	65	75
25/3/2014	13:42	Fine	68.7	70.0	66.5	67	63	75

Location: M5b - City Garden

Date	Time	Weather	Measurement Noise Level			Baseline Level	Construction Noise Level	Limit Level
			Leq	L10	L90	Leq	Leq	Leq
Unit: dB(A), (30min)								
5/3/2014	14:40	Fine	67.6	68.5	66.0	68	68	75
11/3/2014	10:42	Fine	71.4	73.5	66.5	68	69	75
20/3/2014	10:43	Fine	67.5	69.0	64.5	68	68	75
25/3/2014	14:30	Fine	65.1	66.5	63.0	68	65	75

Location: M6 - HK Baptist Church Henrietta Secondary School

Date	Time	Weather	Measurement Noise Level			Baseline Level	Construction Noise Level	Limit Level
			Leq	L10	L90	Leq	Leq	Leq
Unit: dB(A), (30-min)								
5/3/2014	15:26	Fine	74.0	75.0	72.0	71	71	70
11/3/2014	13:30	Cloudy	74.3	75.5	72.5	71	72	70
20/3/2014	13:48	Fine	73.2	74.0	71.5	71	70	70
25/3/2014	15:10	Fine	71.0	72.5	69.0	71	59	70



Noise Monitoring Result

Day Time (0700 - 1900hrs on normal weekdays)

Location: M7e - International Finance Centre (Eastern End of Podium) (Reference Station)

Date	Time	Weather	Measurement Noise Level			Baseline Level	Construction Noise Level	Limit Level
			Leq	L10	L90	Leq	Leq	Leq
Unit: dB(A), (30-min)								
4/3/2014	9:56	Fine	67.9	69.5	65.0	67	61	N/A
10/3/2014	14:00	Cloudy	72.0	76.0	65.0	67	70	N/A
20/3/2014	9:43	Sunny	68.2	70.0	65.5	67	63	N/A
25/3/2014	8:50	Fine	68.1	70.0	64.5	67	62	N/A

Location: M7w - International Finance Centre (Western End of Podium)

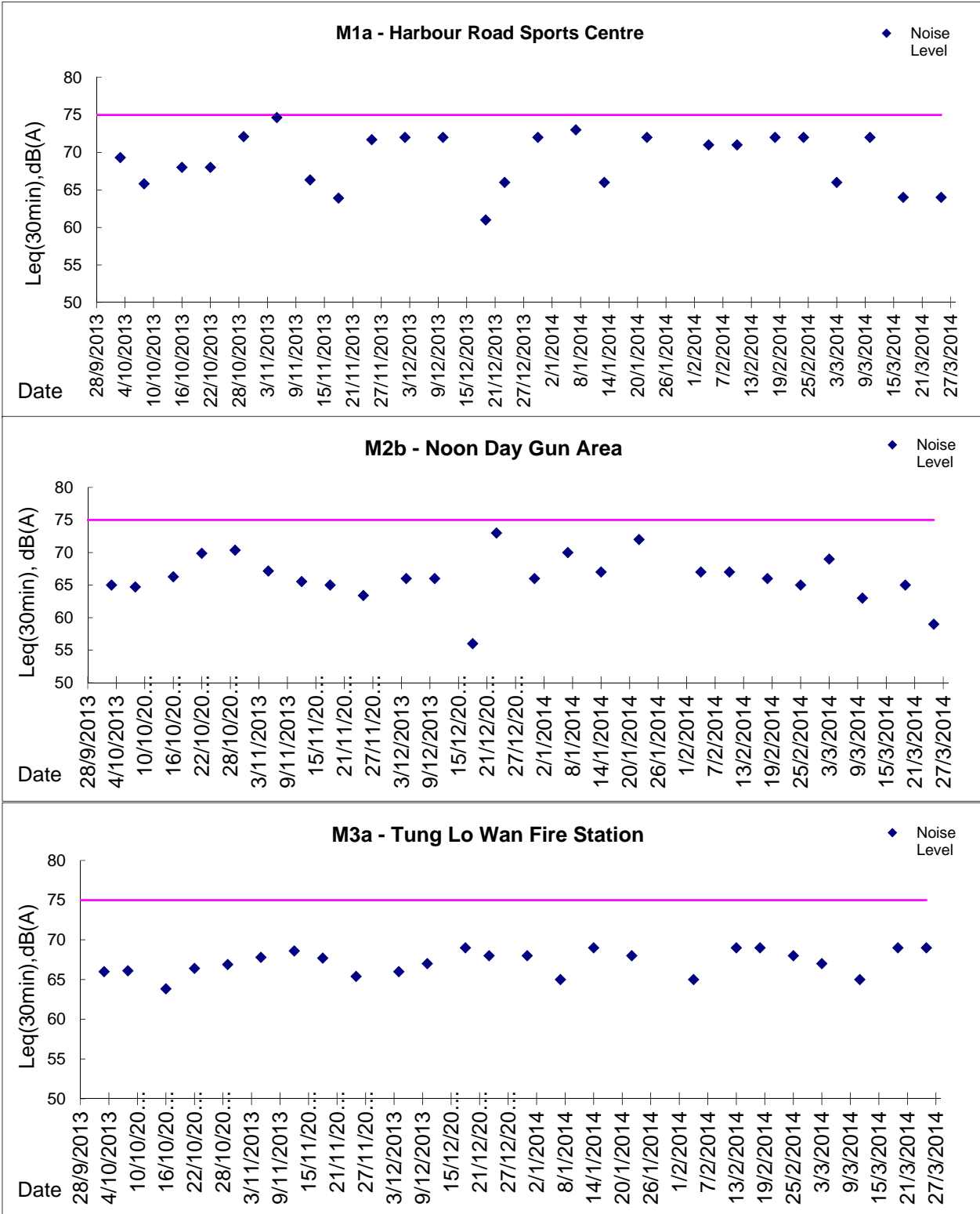
Date	Time	Weather	Measurement Noise Level			Baseline Level	Construction Noise Level	Limit Level
			Leq	L10	L90	Leq	Leq	Leq
Unit: dB(A), (30-min)								
4/3/2014	9:17	Fine	69.8	72.0	65.0	69	59	75
10/3/2014	14:40	Cloudy	69.2	73.5	63.0	69	69	75
20/3/2014	9:09	Sunny	68.8	70.5	65.5	69	69	75
25/3/2014	8:09	Fine	67.1	68.5	65.0	69	67	75

Location: M8 - City Hall

Date	Time	Weather	Measurement Noise Level			Baseline Level	Construction Noise Level	Limit Level
			Leq	L10	L90	Leq	Leq	Leq
Unit: dB(A), (30-min)								
4/3/2014	10:49	Fine	61.5	63.0	58.5	64	62	70
10/3/2014	13:25	Cloudy	61.1	63.5	57.0	64	61	70
17/3/2014	15:05	Cloudy	67.1	68.0	56.5	64	64	70
25/3/2014	9:40	Fine	59.6	61.5	56.5	64	60	70



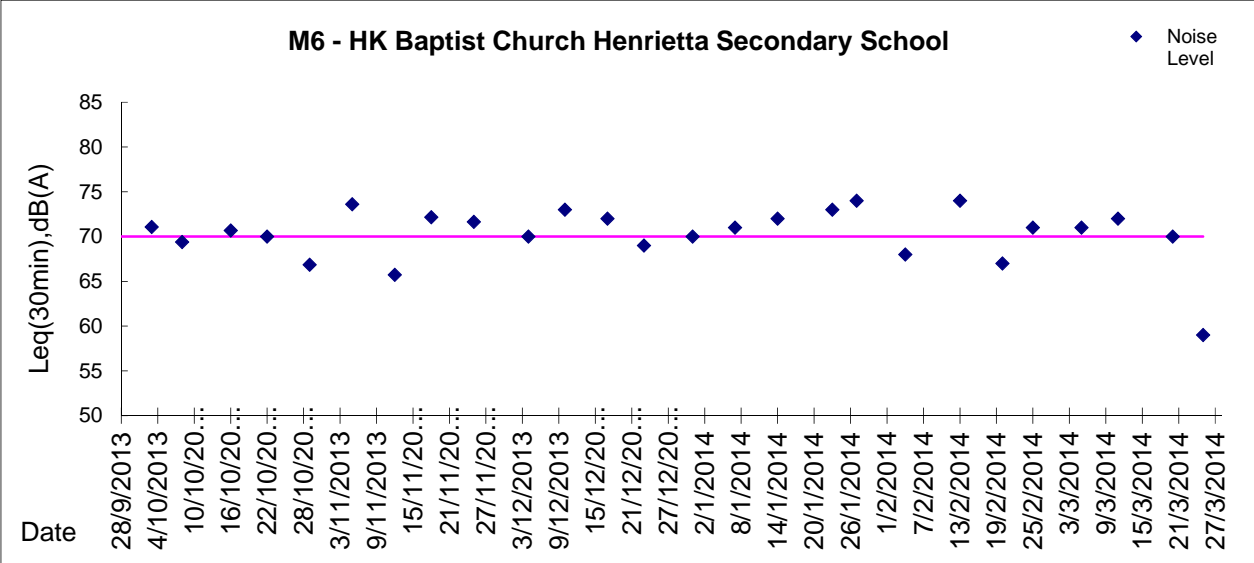
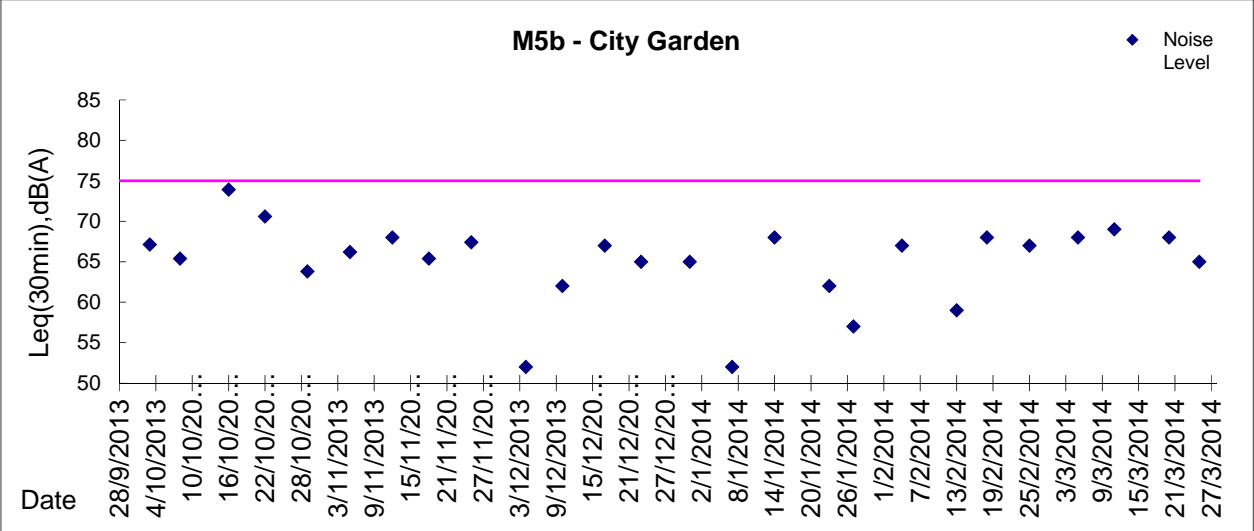
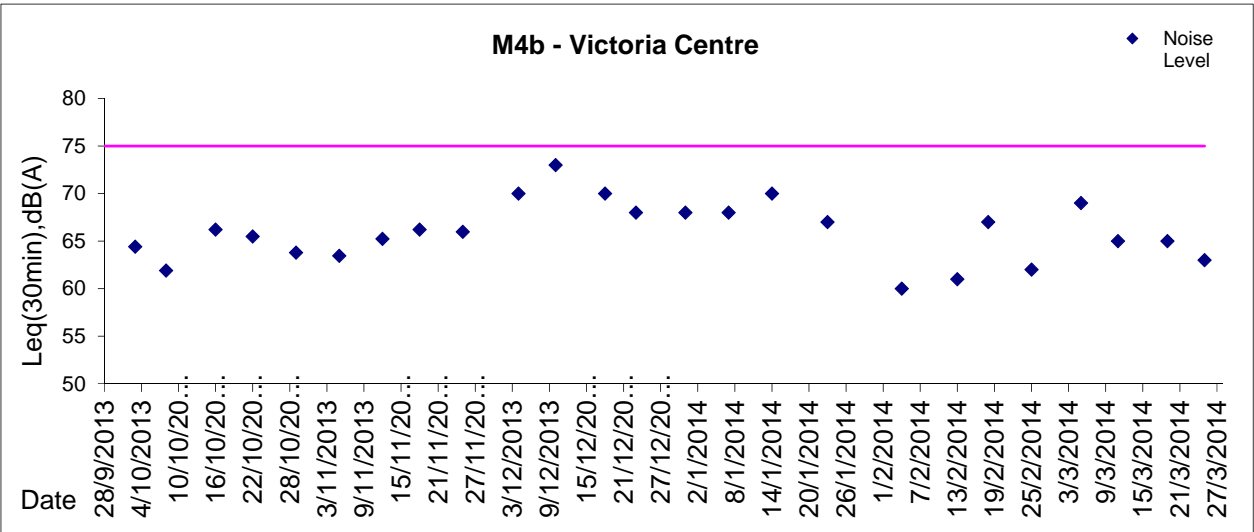
Graphic Presentation of Noise Monitoring Result
Day Time (0700 - 1900hrs on normal weekdays)





Graphic Presentation of Noise Monitoring Result

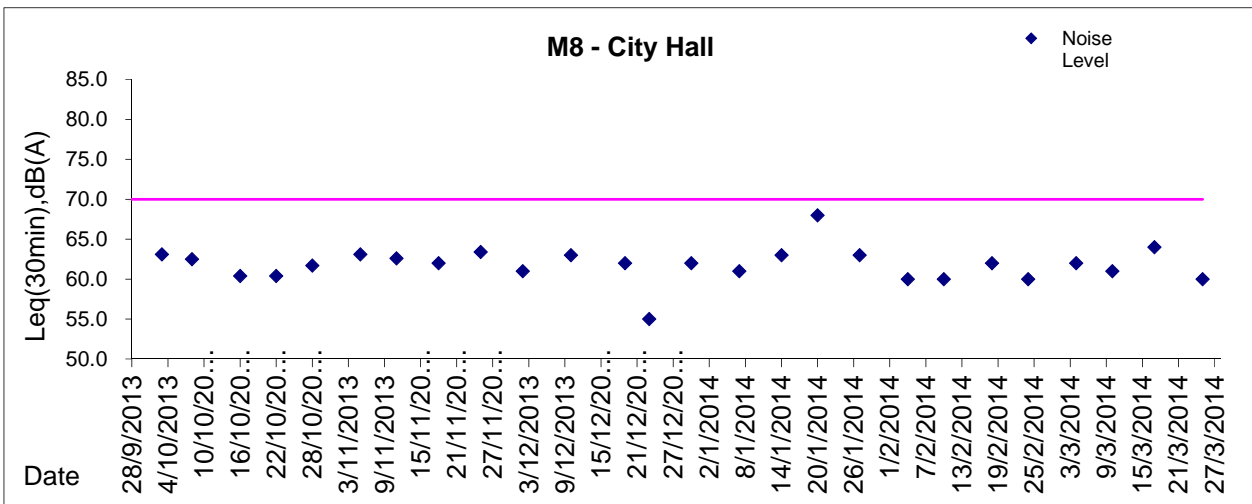
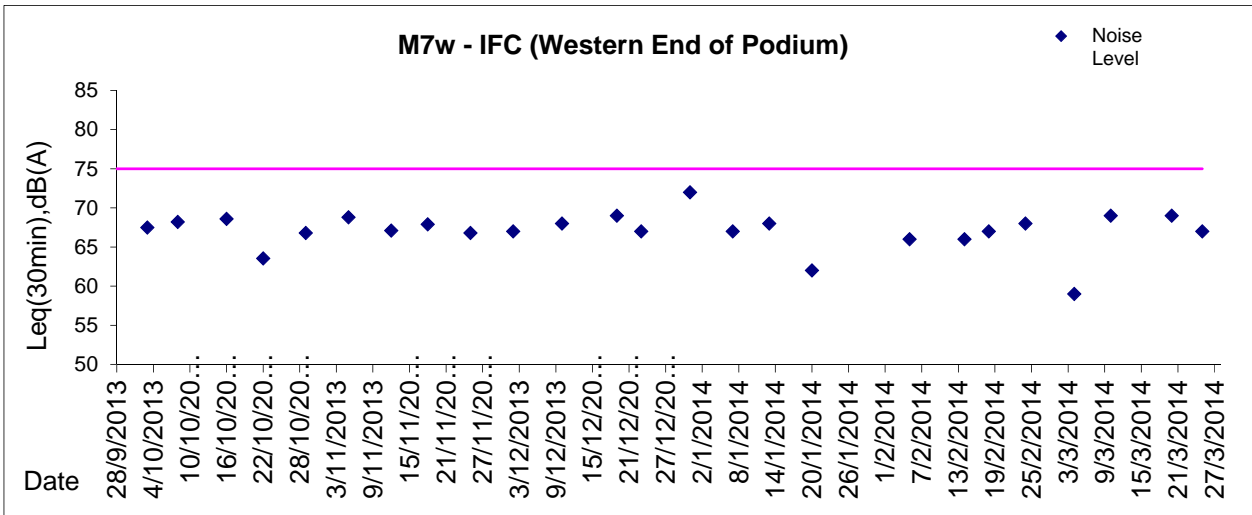
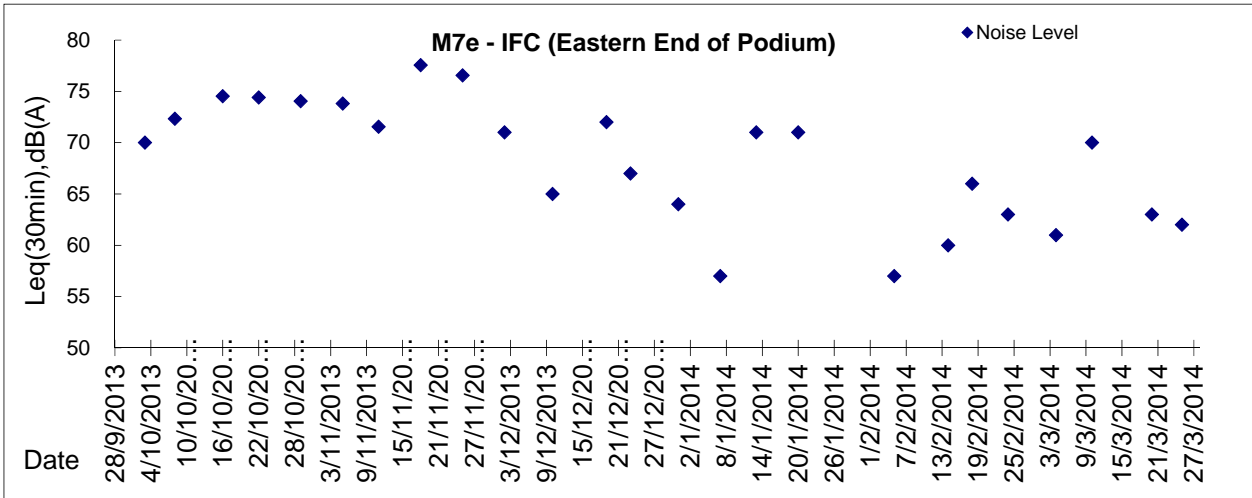
Day Time (0700 - 1900hrs on normal weekdays)





Graphic Presentation of Noise Monitoring Result

Day Time (0700 - 1900hrs on normal weekdays)



* Remark: M7e - IFC (Eastern End of Podium) is a reference monitoring station